

ORGANOID MODEL DATASHEET

MODEL:	Pancreatic Organoid; Tumour - Pancreatic Ductal Adenocarcinoma				
SOURCE:	Derived from xenograft, passage 3, of patient primary tumour				
MODEL ID:	OCIP.285	PPID:	Org_2417	BIOSAFETY:	Level 2

QUALITY CONTROL

Confirmed: Human epithelial cells STR match to patient tissue Mycoplasma negative

CHARACTERIZATION DETAILS

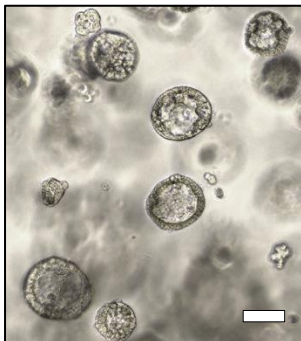
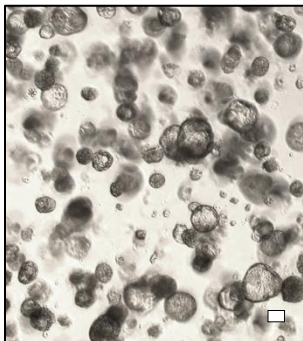
Patient Profile:	Female; age 65
Morphology:	Characteristically grows with thick epithelium and varied lumens
Histology:	Epithelial clusters with multiple lumen, tubular and morular organization, moderate to high cellular crowding with some mitotic figures, columnar cells (some flat), nuclear pleomorphism, some evident nucleoli, little cytoplasm (eventual intracytoplasmic vacuoles); CK19 focal positive
Estimated doubling time (hours):	48

CULTURE RECOMMENDATIONS

Media:	hPDAC
Average splitting ratio:	1:4
Days between passaging:	14
Number of wells [†] for 1 x 10 ⁶ cells:	10-12

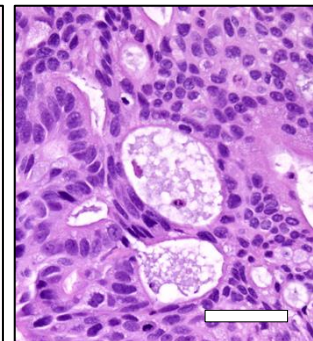
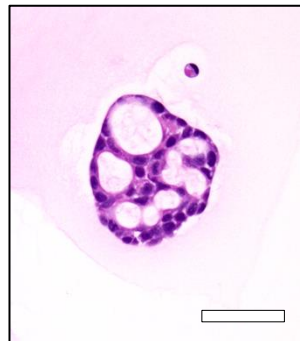
ORGANOIDS IN MATRIGEL

OCIP.285 organoids passage 9 day 16.



HISTOLOGY (HEMATOXYLIN & EOSIN)

OCIP.285 organoids (left) and tissue of origin (right).



Scale bar = 100 μ m.

[†] Number of wells refers to wells of a 24-well tissue culture plate, each containing Matrigel domes of 50 μ l volume. This information is intended as a guide when expanding organoid cultures for larger assays like drug screens.